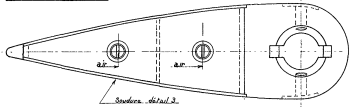


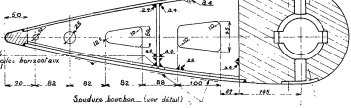
MARINE NATIONALE

ESCORTEURS COTIERS Type LE FOUGUEUX - P1.

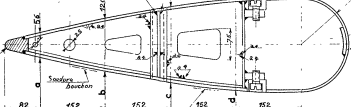
SECTION H9



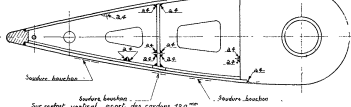
SECTION H8



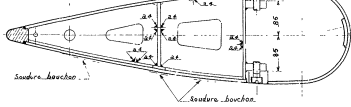
SECTION H7



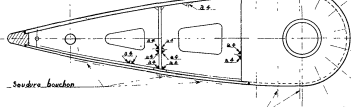
SECTION H6



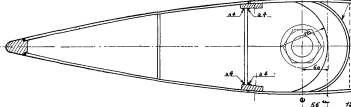
SECTION H5



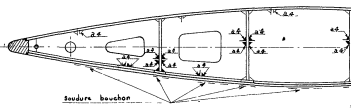
SECTION H4



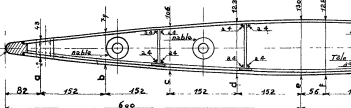
SECTION H3



SECTION H2

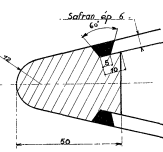


SECTION H1

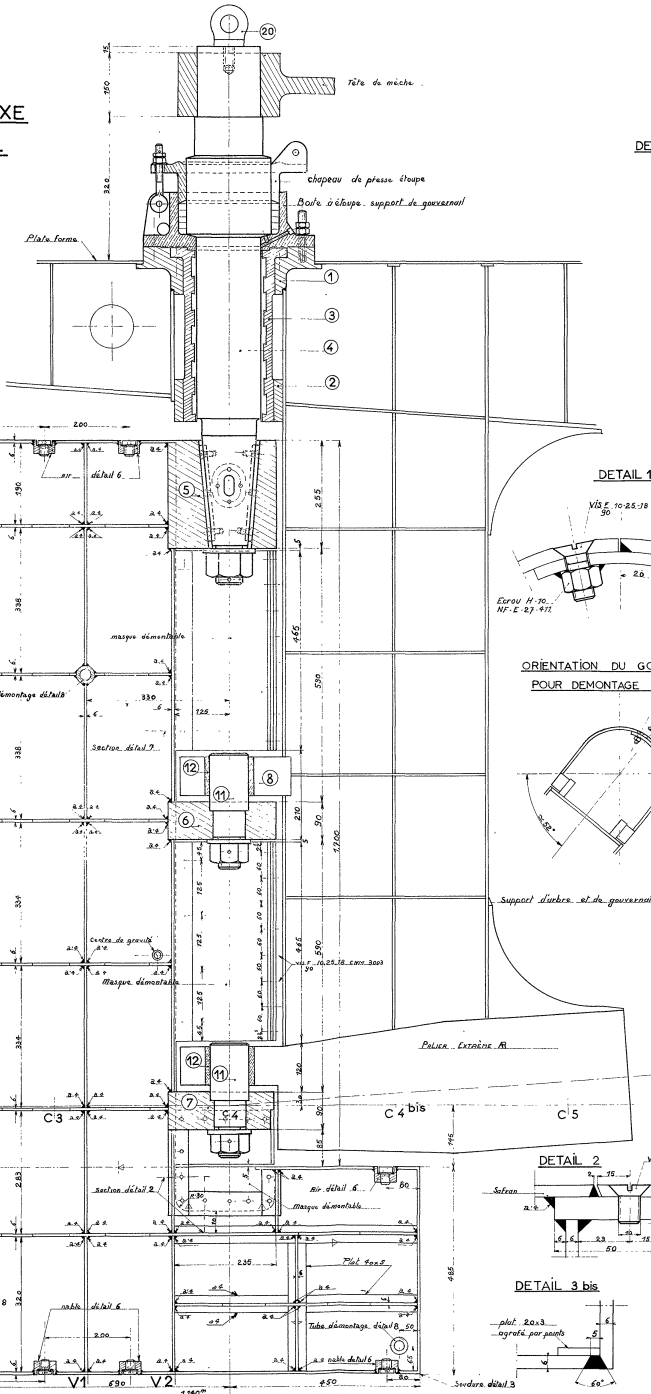
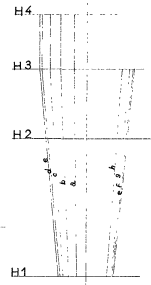


COUPE PAR L'AXE
DU GOUVERNAIL

DÉTAIL DE LA PIÈCE R EN Ac. FORGÉ

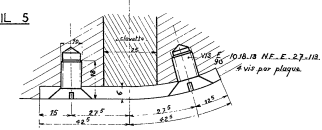


FORMES PARTIE INF
SECTIONS VERTICALES

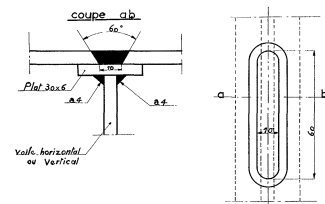


PLAQUE D'ARRÊT DE CLAVETTE TRANSV^{LE}

DÉTAIL 5



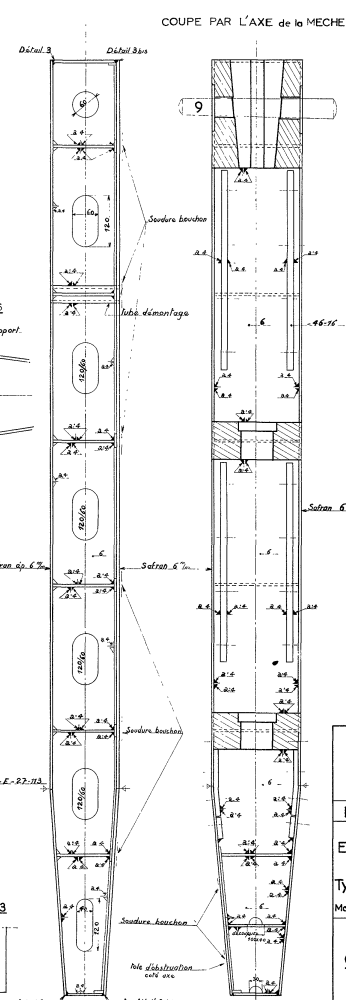
DETAILS DES SOUDURES BOUCHONS



SECTION V1

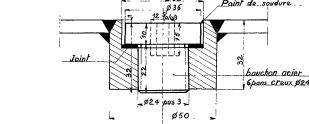
SECTION V2

COUPE PAR L'AXE de la MECH



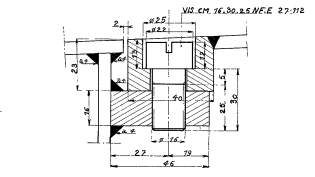
NABLE POUR VIDANGE ET AIR

DÉTAIL 6



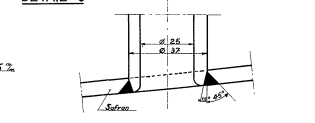
FIXATION DES MASQUES

DÉTAIL 7



FIXATION DES TUBES POUR
DEMONTAGE

DÉTAIL 8



ANCIENS CHANTIERS DUBIGEON
NANTES CHANTENAY

Echelles 1/5 1/4

ESCORTEURS COTIERS

Type LE FOUGUEUX "P1

Marché n°50ACCM du 9 décembre 1954

GOUVERNAIL

ENSEMBLE

Certifié conforme à l'exécution
Nantes le : 29.3.1957
Le Directeur
Vu l'ingénieur en chef du
génie maritime chef de la
circonscription de Nantes

PL_43.